



ADDENDUM 2

PROJECT NAME: Texas A&M University Area Streets

DATE: January 15, 2025

PROJECT NO: 23-03921

This addendum is separated into sections for convenience; however, all respondents, bidders, contractors, subcontractors, material men, and other parties must be responsible for reading the entire addendum. The failure to list an item or items in all affected sections of this addendum does not relieve any party affected from performing as per instructions, providing that the information is set forth one time any place in this addendum. These documents will be attached to and will become part of the Contract Documents for this project. The respondent/bidder is required to acknowledge the receipt of this addendum.

GENERAL:

1. The following changes and/or additions to the Contract Documents, via this addendum, must apply to proposals made for and to the execution of the various parts of the work affected thereby.
2. Careful note of the Addendum must be taken by all interested parties and all trades affected must be fully advised in their performance of the work involved.
3. This Addendum is hereby made part of the project requirements and contract documents for the above reference project. Ensure to acknowledge this Addendum in CivCast when downloading this Addendum. Acknowledgement of this Addendum is a requirement in order to submit bid in CivCast. This addendum consists of the items and their associated attachments as listed below:

A. ADMINISTRATIVE CHANGES TO BID DOCUMENTS:

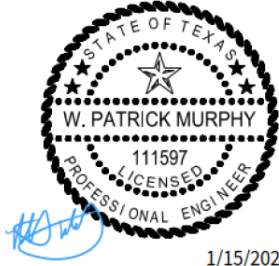
1. Added the following Unit Price items to Bid Form
 - a. Utilities – Division VI – Traffic Signals – STREET LIGHT BASE INSTALLATION
 - b. SWPPP / Misc. – CONCRETE WASHOUT PIT
2. CPS Pre-Approved Contractors document uploaded

B. CHANGES TO PLANS / SPECIFICATIONS:

1. PROVIDED MISCELLANEOUS SPECIFICATION FOR CONCRETE WASHOUT PIT

SIGNED AND SEALED BY CONSULTANT (Engineer/Architect of Record)

By signing and sealing this addendum, the Engineer/Architect of Record acknowledges that the sign/seal is only for changes/clarifications to the items associated with the Engineer's/Architect's work referenced in this addendum.



1/15/2025

Cude Engineers, LLC
TBPE FIRM #0455

David Rios

David Rios
Procurement Manager
Finance Department - Procurement Division

END OF ADDENDUM NO. 2



CITY OF SAN ANTONIO
TEXAS A&M UNIVERSITY AREA STREETS
Project No. 23-03921
CPS PRE-APPROVED CONTRACTORS

Illumination work included in this project shall be performed by a contractor pre-approved by CPS Energy to do the work. A list of pre-approved contractors/allows:

Contractor Name	Point of Contact	Contact Number	Contact Email
HJD Capital Electric, Inc	Ed Belmares	210-681-0954	ebelmares@hjdcapital.com
Zachry Underground & Utility Services Inc	Curtis Schwartz	210 6871 3979	Curtis.Schwartz@zachrycorp.com
Greenstone Electrical Services LLC	Carl Williams	830-370-5560	carl@greenstoneelectric.com
Miller Bros	Scott Barrow	210-416-9816	sbarrow@millerbros.us
Bartek Construction	Casey Bartek	210-827-0563	casey@bartektx.com
Mastec Utility Construction	Elias Delgado	210-669-6033	elias.delgado@mastec.com

GOVERNING SPECIFICATIONS

All specifications applicable to this project are identified as follows:

2024 TxDOT Standard Specifications for Construction and Maintenance of Highways, Streets and Bridges with any revisions thereto where specified "TxDOT".

Texas Department of Transportation - 2024

ITEM NO.	DESCRIPTION
105	REMOVING TREATED AND UNTREATED BASE AND ASPHALT PAVEMENT
204	SPRINKLING
216	PROOF ROLLING
420	CONCRETE SUBSTRUCTURES
450	RAILING
462	CONC BOX CULVERT & DRAINS
465	JUNCTION BOXES, MANHOLES, AND INLETS
466	HEADWALLS AND WINGWALL
467	SAFETY END TREATMENT
496	REMOVING STRUCTURES
531	SIDEWALKS
552	WIRE FENCE
662	WORK ZONE PAVEMENT MARKINGS

ITEM NO.	DESCRIPTION
100	MOBILIZATION
101	PREPARING RIGHT-OF-WAY
102	OBLITERATING ABANDONED STREET
103	REMOVE CONCRETE
104	STREET EXCAVATION
105	CHANNEL EXCAVATION
106	BOX CULVERT EXCAVATION AND BACKFILL
107	EMBANKMENT
108	LIME TREATED SUBGRADE
209	CONCRETE PAVEMENT
210	ROLLING
300	CONCRETE
301	REINFORCING STEEL
303	WELDED WIRE FLAT SHEETS
306	STRUCTURE EXCAVATION
307	CONCRETE STRUCTURES
400	EXCAVATION, TRENCHING, AND BACKFILLING
401	REINFORCED CONCRETE PIPE
403	STORM SEWER JUNCTION BOXES AND INLETS
407	CONCRETE ENCASEMENT, CRADLES, SADDLES, AND COLLARS
410	SUBGRADE FILLER
412	CEMENT STABILIZED SAND
413	FLOWABLE FILL
500	CONCRETE CURB, GUTTER, AND CONCRETE CURB AND GUTTER
502	CONCRETE SIDEWALKS
503	ASHPHALTIC CONCRETE, PORTLAND CEMENT CONCRETE, AND GRAVEL DRIVEWAYS
505	CONCRETE RIP-RAP

510	TIMBER GUARD POSTS
512	ADJUSTING MANHOLES AND VALVE BOXES
515	TOPSOIL
516	SODDING
520	HYDROMULCHING
522	SIDEWALK PIPE RAILING
530	BARRICADES, SIGNS, AND TRAFFIC HANDLING
531	SIGNS
535	HOT APPLIED THERMOPLASTIC PAVEMENT MARKINGS
537	RAISED PAVEMENT MARKERS
540	TEMPORARY EROSION, SEDIMENTATION AND WATER POLLUTION PREVENTION AND CONTROL
550	TRENCH EXCAVATION SAFETY PROTECTION
618	CONDUIT
636	ALUMINUM SIGNS

SAWS Standard Specifications - 2021

ITEM NO.	DESCRIPTION
824	WATER SERVICE SUPPLY LINES NEW SERVICES
833	METER AND METER BOX INSTALLATION
851	ADJUST EXISTING MANHOLES

ITEM NO.	DESCRIPTION
801	TREE AND LANDSCAPE PROTECTION
1000	3" PVC (WATER LINE)
9000	PLANT, MULCH, AND BED PREPARATION
9001	TREES
9004	IRRIGATION
9025	PLANT MAINTENANCE AND WARRANTY

ITEM NO.	DESCRIPTION
401	SPECIAL PROVISION TO REINFORCED CONCRETE PIPE (MAY 2009)
403	SPECIAL PROVISION TO STORM SEWER JUNCTION BOXES AND INLETS (MAY 2009)
405	SPECIAL PROVISION TO CONCRETE RIPRAP (MAY 2009)
502	SPECIAL PROVISION TO CONCRETE SIDEWALKS (MAY 2009)
503	SPECIAL PROVISION TO ASPHALTIC CONCRETE, PORTLAND CEMENT CONCRETE, AND GRAVEL DRIVEWAYS (MAY 2009)
505	SPECIAL PROVISION TO CONCRETE RIP-RAP (MAY 2009)
520	SPECIAL PROVISION TO HYDROMULCHING (MAY 2009)

Miscellaneous Special Specifications

ITEM NO.	DESCRIPTION
N/A	CONCRETE WASHOUT PIT

1.4.18 Concrete Washout Areas

The purpose of concrete washout areas is to prevent or reduce the discharge of pollutants to stormwater from concrete waste by conducting washout offsite, performing onsite washout in a designated area, and training employees and subcontractors.

The following steps will help reduce stormwater pollution from concrete wastes:

- Incorporate requirements for concrete waste management into material supplier and subcontractor agreements.
- Avoid mixing excess amounts of fresh concrete.
- Perform washout of concrete trucks in designated areas only.
- Do not wash out concrete trucks into storm drains, open ditches, streets, or streams.
- Do not allow excess concrete to be dumped onsite, except in designated areas.

For onsite washout:

- Locate washout area at least 50 feet from sensitive features, storm drains, open ditches, or water bodies. Do not allow runoff from this area by constructing a temporary pit or bermed area large enough for liquid and solid waste.
- Wash out wastes into the temporary pit where the concrete can set, be broken up, and then disposed properly.

Below grade concrete washout facilities are typical. These consist of a lined excavation sufficiently large to hold expected volume of washout material. Above grade facilities are used if excavation is not practical. Temporary concrete washout facility (type above grade) should be constructed as shown on the details at the end of this section, with sufficient quantity and volume to contain all liquid and concrete waste generated by washout operations. Plastic lining material should be a minimum of 10 mil in polyethylene sheeting and should be free of holes, tears, or other defects that compromise the impermeability of the material.

When temporary concrete washout facilities are no longer required for the work, the hardened concrete should be removed and disposed of. Materials used to construct temporary concrete washout facilities should be removed from the site of the work and disposed of. Holes, depressions or other ground disturbance caused by the removal of the temporary concrete washout facilities should be backfilled and repaired.

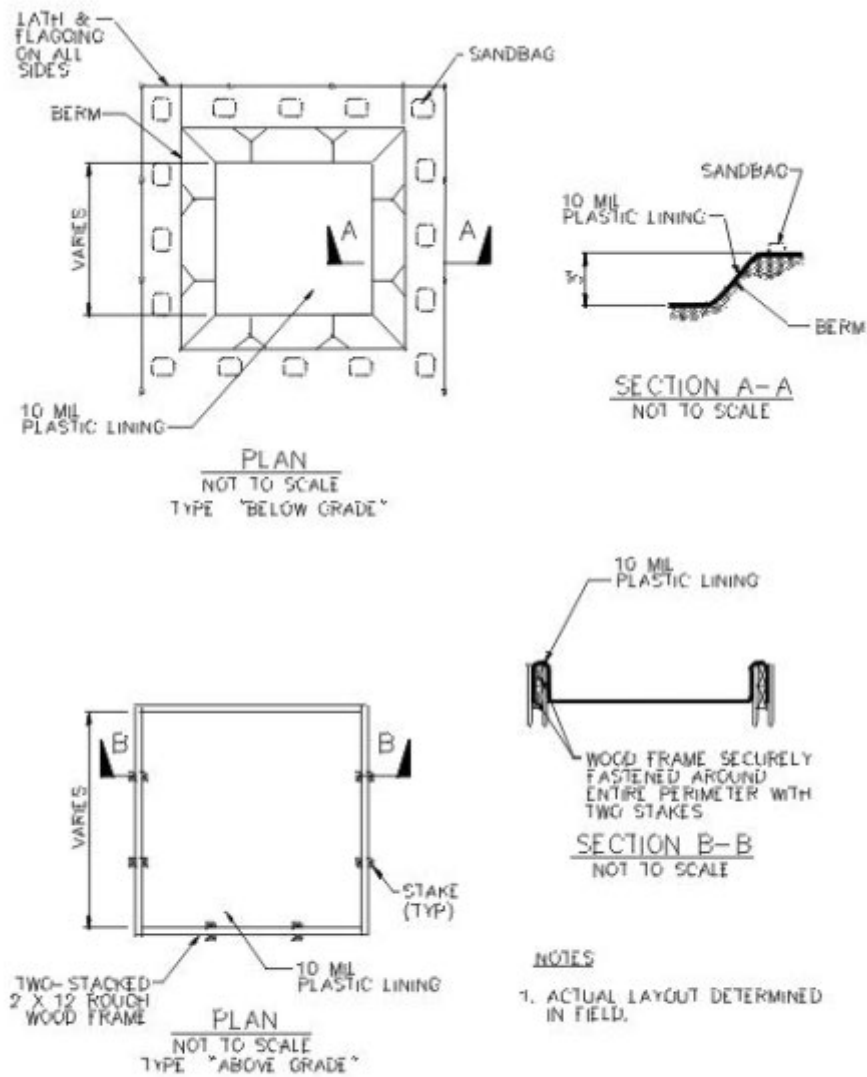


Figure 1-43 Schematics of Concrete Washout Areas