

**CITY OF SAN ANTONIO
PUBLIC WORKS DEPARTMENT
CITY COUNCIL AGENDA MEMORANDUM**

TO: Sheryl Sculley, City Manager
FROM: Thomas G. Wendorf, P.E., Director of Public Works
SUBJECT: Statewide Transportation Enhancement Program Grant Application Submittal
DATE: March 2, 2006

SUMMARY AND RECOMMENDATIONS

This ordinance authorizes the submission of grant applications by the City of San Antonio to the Texas Department of Transportation (TxDOT) for Statewide Transportation Enhancement Program grants.

Staff recommends approval of this ordinance.

BACKGROUND INFORMATION

The Statewide Transportation Enhancement Program was renewed in the Federal Highway legislation entitled Safe, Accountable, Flexible and Efficient Transportation Equity Act: A Legacy for Users (SAFETEA-LU). The Statewide Transportation Enhancement Program provides municipalities with the opportunity to fund transportation enhancement projects throughout the community. This program provides municipalities with a unique opportunity to leverage federal funds with local dollars. Projects that receive approval will be funded 80% with Federal funds and 20% from local matching dollars, which can include some in-kind contributions.

Awarded enhancement projects can fund non-traditional transportation projects, such as the design and construction of facilities for bicycles and pedestrians, historic preservation, provision of educational activities for pedestrians and bicyclists and landscaping beautification. Eligible projects must demonstrate how the project relates to the surface transportation system by function or impact, and how activities in the project complement the movement of people and goods. Projects must incorporate one or more of the following 12 categories:

- Pedestrian and bicycle facilities.
- Pedestrian and bicycle safety and education activities.
- Acquisition of scenic easements and scenic and historic properties.
- Scenic or historic highway programs (including providing tourist and welcome center facilities).
- Landscaping and scenic beautification.
- Historic preservation.

- Rehabilitation or operation of historic transportation buildings, structures, or facilities (including historic railroad facilities and canals).
- Preservation of abandoned railway corridors (including conversion and use for pedestrian and bicycle facilities).
- Control and removal of outdoor advertising.
- Archaeological planning and research.
- Environmental mitigation to address water pollution due to highway runoff or reduce vehicle-caused wildlife mortality while maintaining habitat connectivity.
- Establishment of transportation museums.

Since 1993, a total of 505 enhancement projects totaling over \$466 million have been awarded in the State of Texas. Previous San Antonio area funded Enhancement Program projects total over \$6.8 million and include the Mission Trails project, Salado Creek Hike and Bike (Phases 1 and 2) and the Hays Street Bridge renovation. TxDOT funding availability could potentially award between \$4 and \$8 million to the San Antonio area. The City of San Antonio proposes submittal of eight transportation enhancement projects as shown in Attachment 1. These projects are a result of recommendations identified in various neighborhood and community plans and from brainstorming meetings held on December 19, 2005 and January 23, 2006 with staff from various City departments. In addition, project ideas were discussed with the Pedestrian and Bicycle Mobility Advisory Committees. Proposed Enhancement Program project maps and associated amenities are shown in Attachment 2.

Applications are due April 28, 2006 and require City Council, Metropolitan Planning Organization (MPO) Technical Advisory Committee and MPO Transportation Policy Board approval.

The following timeline denotes staff action to date and important program milestones:

- December 19, 2005 – First core working group meeting held.
- December 2005 – February 2006 – Individual project group meetings held with Public Works Department Bicycle and Pedestrian Coordinator.
- January 23, 2006 - Second core working group meeting held.
- TxDOT District Office, technical review (allow 1 month).
- February 3, 2006 - All draft Council documents due to Public Works staff for review.
- March 2, 2006 - Request City Council approval.
- March 3, 2006 (or April 7, 2006) Metropolitan Planning Organization (MPO) Technical Advisory Committee approval.
- March 27, 2006 (or April 24, 2006) MPO Transportation Policy Board approval.
- April 28, 2005, 5:00 pm – Application submittal due.
- December 2006 - Award notification.

POLICY ANALYSIS

Approval of this ordinance is a continuation of City Council policy to seek funding and leveraging opportunities to promote the safety, education and enhancement of our community.

FISCAL IMPACT

This ordinance requires no General Fund commitment. Approved projects will be funded 80% with Federal funds on a reimbursable basis and require 20% from local matching dollars of which a portion can include in-kind contributions. Matching funds and/or in-kind contributions are available from the Advanced Transportation District, Brooks Development Authority, Guenther Enterprises, and Tax Increment Reinvestment Zone and VIA Metropolitan Transit.

COORDINATION

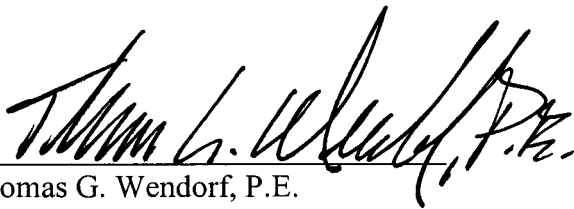
The proposed project grant applications have been coordinated with the Brooks Development Authority, Development Services Department, Finance Department, Neighborhood Action Department, Office of External Relations, Office of Management and Budget, Parks and Recreation Department and Planning Department.

SUPPLEMENTARY COMMENTS

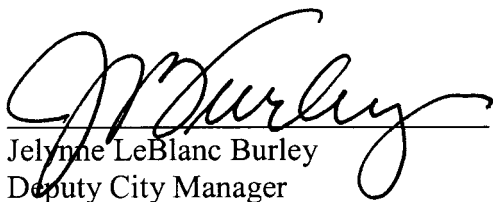
A Discretionary Contracts Disclosure form is not required.

ATTACHMENTS

1. Project Description Listing
2. Proposed project maps

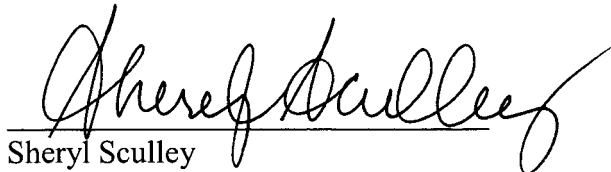


Thomas G. Wendorf, P.E.
Director of Public Works



Jelynn LeBlanc Burley
Deputy City Manager

Approved for Council Consideration:



Sheryl Sculley
City Manager

Statewide Transportation Enhancement Program Project List

Project Description	Estimated Cost
<p>Eastside Hike and Bike Amenities – This project contains 3 components working together to provide enhanced pedestrian and bicycle amenities for visitors and residents of the Eastside of San Antonio. The first component will build upon the 2.6-mile route included in the Hays Street Bridge Restoration Grant and other City bike facilities, currently planned, funded and designed. The proposal includes enhancement to the more than 8-mile network to accommodate both walkers and bicyclists. New sidewalks will be constructed in areas where none exist and substandard sidewalks will be replaced along the network. The route will traverse some of San Antonio's oldest neighborhoods, connecting 5 schools, 14 parks, 1 community college and 8 community centers. In addition, it will provide access to mass transit, a connection to 31 historic cemeteries, Sunset Station Train Depot and St. Paul's Square Commercial District, as well as a connection to the Salado Creekway linear park system. The second component includes retrofitting Martin Luther King Drive into a feature street; providing streetscape enhancements, such as landscaping, street furniture, public art elements, decorative lighting, wider sidewalks and dedicated bicycle lanes. The last component provides a hike/bike shelter along the network, at the intersection of New Braunfels and East Commerce. This important component will provide a connection to the VIA bus routes, shelter, hike/bike/transit route information, seating and bike parking at this prominent location in the middle of the route.</p>	\$20 Million
<p>City Council Districts - 1 and 2</p>	
<p>Leverage Funding Source – Other City funds to include: Advanced Transportation District, Tax Increment Reinvestment Zone (TIRZ), VIA Metropolitan Transit (in kind)</p>	
<p>San Antonio Bike Stations and Related Amenities - This project will design and construct 3 bicycle stations/shelters and 1 pedestrian bridge in San Antonio. The first bike station will be located in the downtown area with 2 other shelters outside of the downtown area. It is proposed that the downtown station include secure bicycle parking, be staffed from 6 am to 9 pm - 7 days a week with someone who can intake bikes similar to a valet, light refreshments and bicycle related items (available from vending machines), restroom, locker/changing room (lockers would be coin operated), bicycle maps and transit route information. The downtown bike station is proposed for the Smith House located in HemisFair Park. The two smaller locations will include some of the same amenities, such as bicycle parking, bicycle maps and transit route information, but without the need for 24-hour staff. Other possible additions may include vending machines with refreshments and bicycle repair kits. The smaller locations will be located in Woodlawn Lake Park and Apache Creek Park (near Our Lady of the Lake University). All locations are near existing bicycle facilities to ensure the highest usage. The pedestrian bridge will be constructed at Woodlawn Lake Park.</p>	\$ 5 Million

Statewide Transportation Enhancement Program Project List

City Council Districts – 1, 5 and 7	
Leverage Funding Source - Other City funds to include: ATD, VIA (in kind contribution)	
Landscape enhancement of medians throughout San Antonio - Enhance individual medians throughout the City, to include: <ul style="list-style-type: none"> • Austin Highway (suggested by Planning Department) • Blanco Road (Bitters to 1604) • Commerce Street • Thousand Oaks • General McMullen • N. New Braunfels (Commerce to Houston) • Pecan Valley 	\$1 Million
City Council Districts – 2, 3, 9 and 10	
Leverage Funding Source - Other City funds to include: ATD	
Design and construction of pedestrian refuge islands throughout San Antonio - Install pedestrian islands at 25 locations throughout San Antonio. Locations include: <ul style="list-style-type: none"> • Oblate at El Montan (Oblate School of Excellence) • Midcrown at Prince Valiant (Ed White Middle School) • Raybon (at Camelot Elementary School) • Raybon (at Roosevelt High School) • Walters at St. Phillips (Stella) • Walters at St. Phillips (Maryland) • Woodlake Parkway at Woodlake Middle School • Pecan Valley at Garcia Apartments • Pecan Valley at Kellis • Horal at Angel Valley • S. Zarzamora near Mayfield • Nogalitos between Saldana and Carroll • Marbach at John Jay High School 	\$1.75 Million

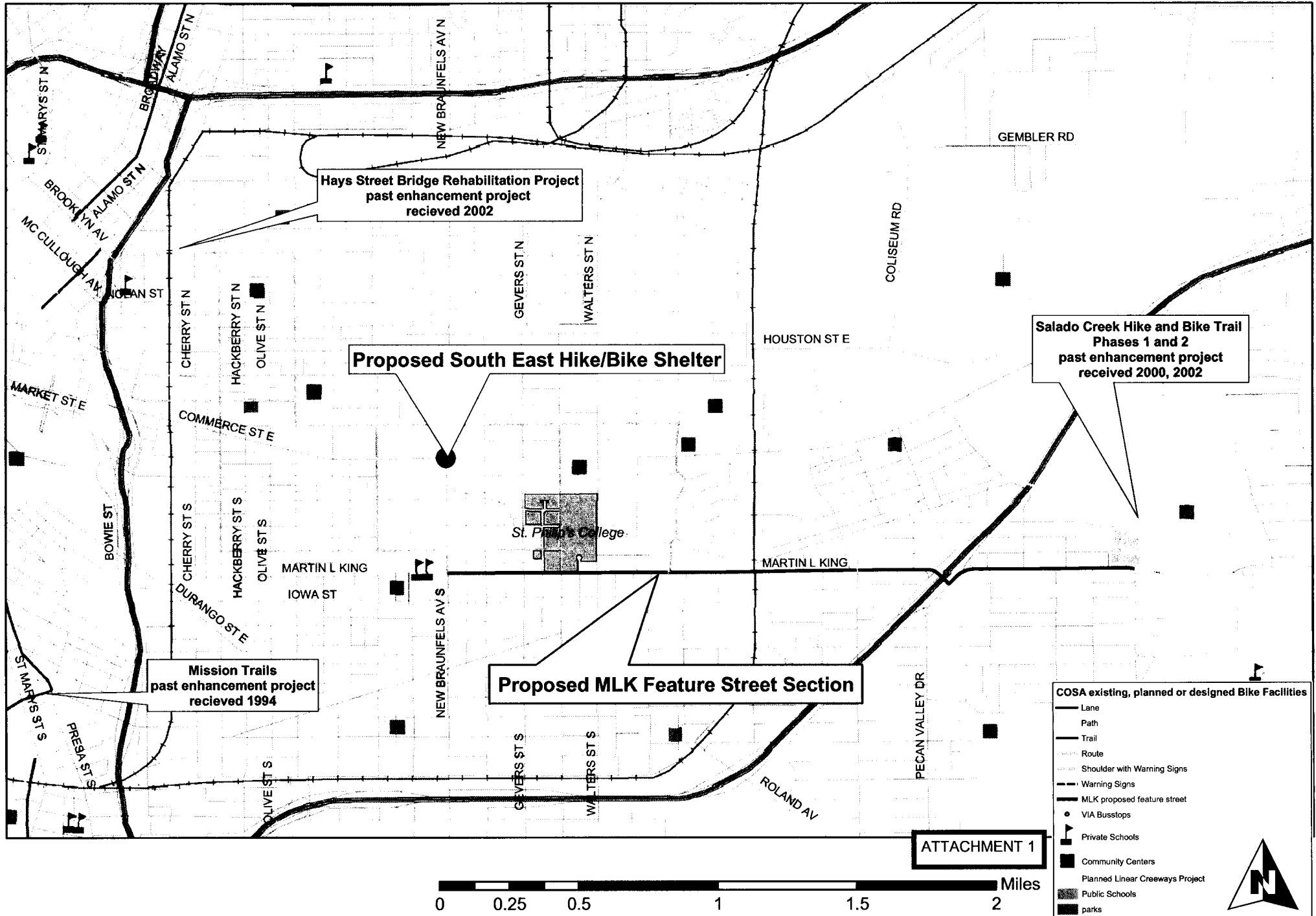
Statewide Transportation Enhancement Program Project List

<ul style="list-style-type: none"> • Military Drive West at Guerra Library • Seascape between Tiger Path and Lynk Range (Lewis Elementary School) • Hillcrest between Havenview and Vantage (Lee's Creek Park) • Broadway at Allensworth • Bitters at MacArthur High School • Nacogdoches at Commanche Lookout Park • Stahl Road at Stahl Elementary School • San Pedro from Myrtle to Courtland • San Pedro at VIA/Bill Millers 	
City Council Districts – 1, 2, 3, 4, 5, 6, 7, 9 and 10	
Leverage Funding Source - Other City funds to include: ATD	
Hays Street Bridge Park Development and Relocation/Rehabilitation of Rail Station – Project includes the design and construction of a new park located adjacent to the Hays Street Bridge (land on Cherry Street to be donated by BudCo to COSA Parks and Recreation Department). Additionally, a historic railroad building owned by Union Pacific has been suggested to be relocated to the site from a nearby rail yard to the park. The park and the renovated railroad building could serve the neighborhood and visitors as a trail head with a restroom, visitor center or neighborhood museum.	\$1 Million
City Council District – 2	
Leverage Funding Source – Other City funds to include: ATD, Land donation (in kind contribution)	
Safe School Route Educational Campaign - Provide safe school routes to 54 elementary schools in the Northside Independent School District. Evaluate the areas around each school, prepare maps and distribute to users.	\$1.8 Million
City Council Districts – 4, 6, 7 and 8	
Leverage Funding Source - Other City funds to include: ATD	
Provide multi-use path between Lion's Field and the San Antonio River to include Avenue B and Rio Perla.	\$1 Million
City Council Districts – 1 and 2	
Leverage Funding Source – Private funds	

Statewide Transportation Enhancement Program Project List

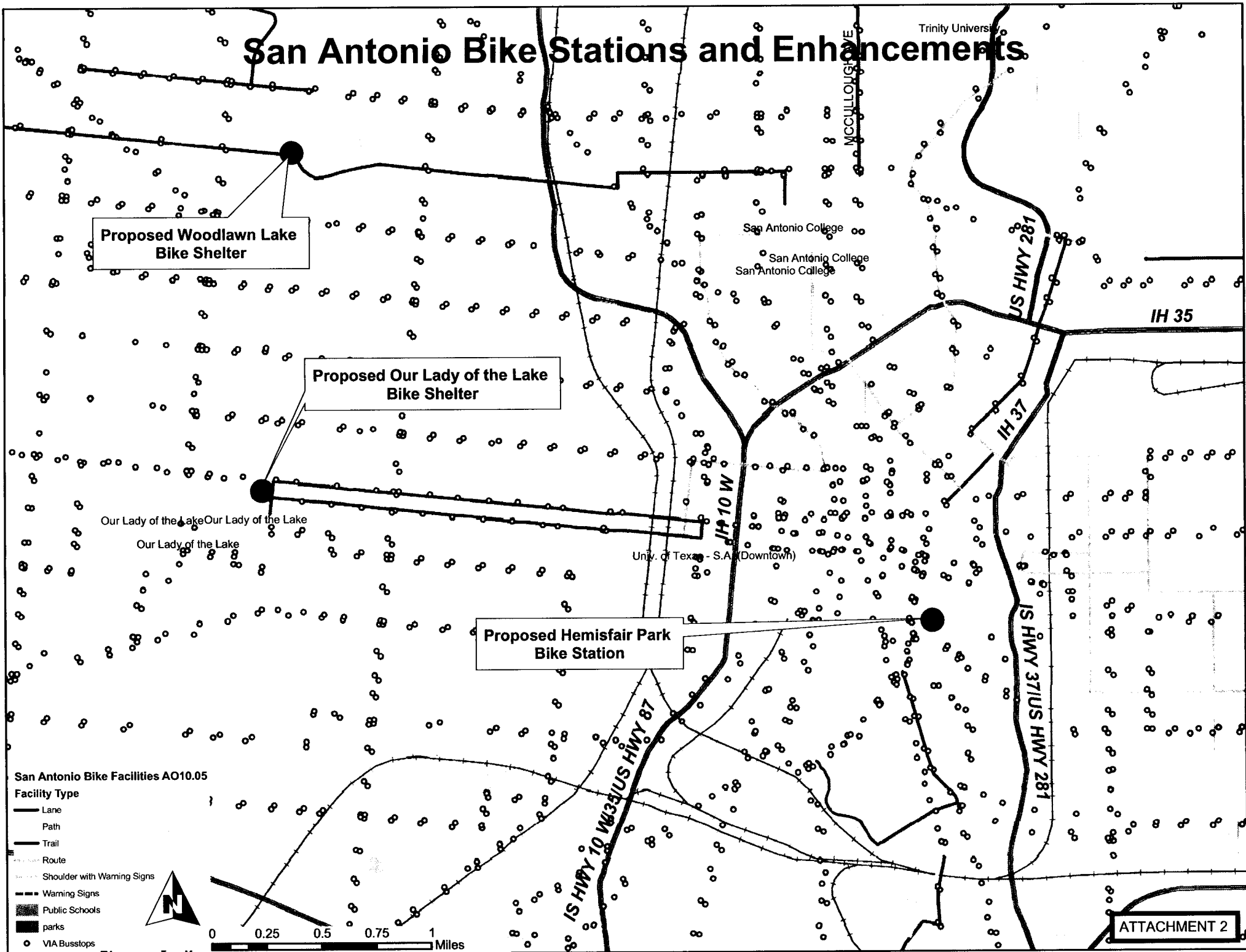
Brooks City Base Multi Use Path System - Installation of approximately 2 miles of 10-foot multi-use path connecting retail, office, school, transit, municipal and recreational opportunities throughout the complex.	\$1 Million
City Council District - 3	
Leverage Funding Source – Other City funds to include: ATD and Brooks Development Authority	

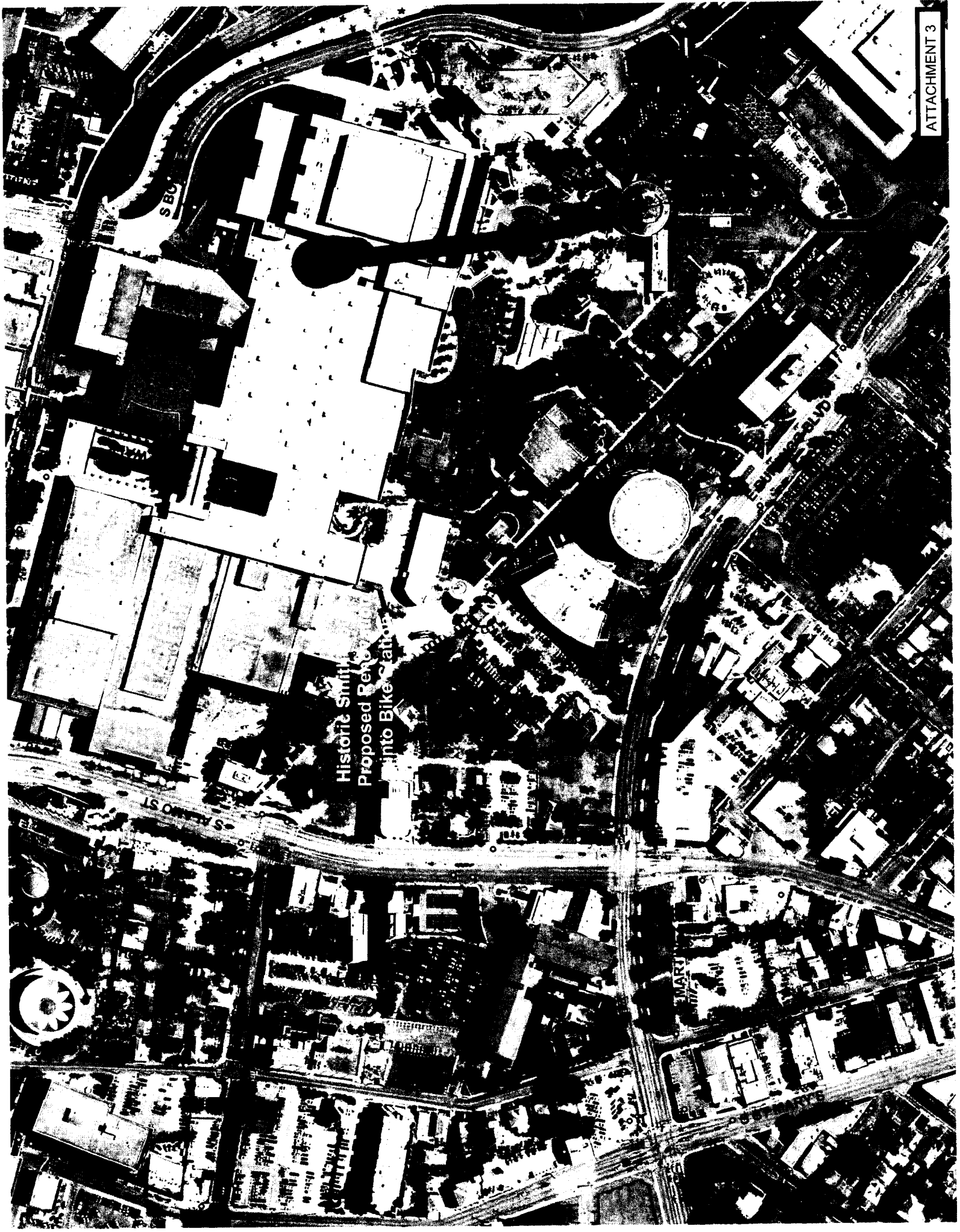
Eastside Hike and Bike Amenities



ATTACHMENT 1

San Antonio Bike Stations and Enhancements





Historic Smith
Proposed Reconfig
into Bike Station



ATTACHMENT 4

Legend
bikefacilities_accommodation2

TYPE	
—	Lane
—	Path
—	Trail
—	Route
—	Shoulder with Warning Signs
—	Warning Signs

Our Lady of the Lake University Bike Shelter

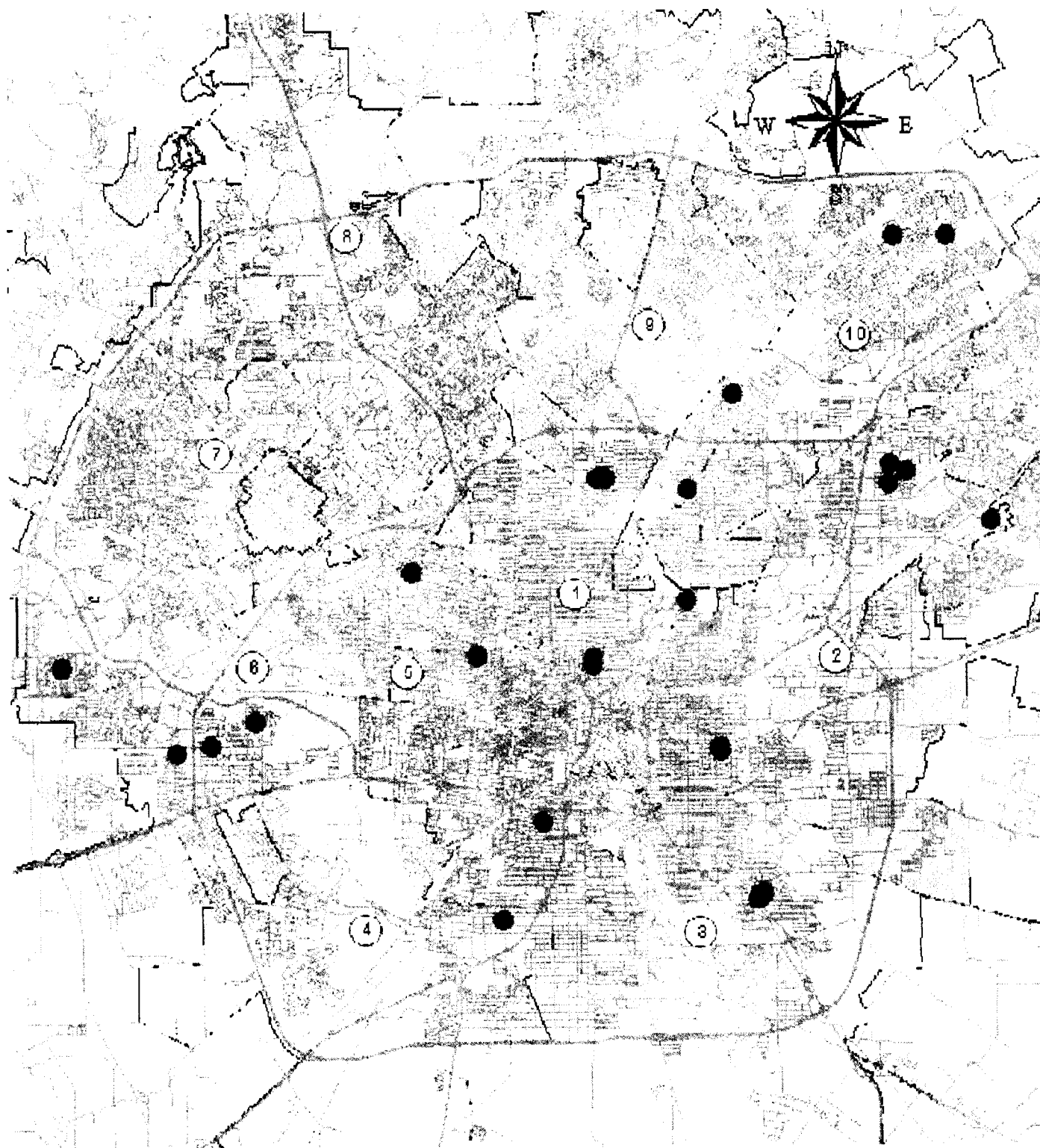


San Antonio Bike Facilities AO10.05 Facility Type

- Lane
- Path
- Trail
- Route
- Shoulder with Warning Signs
- Warning Signs
- parks
- Public Schools
- VIA Busstops

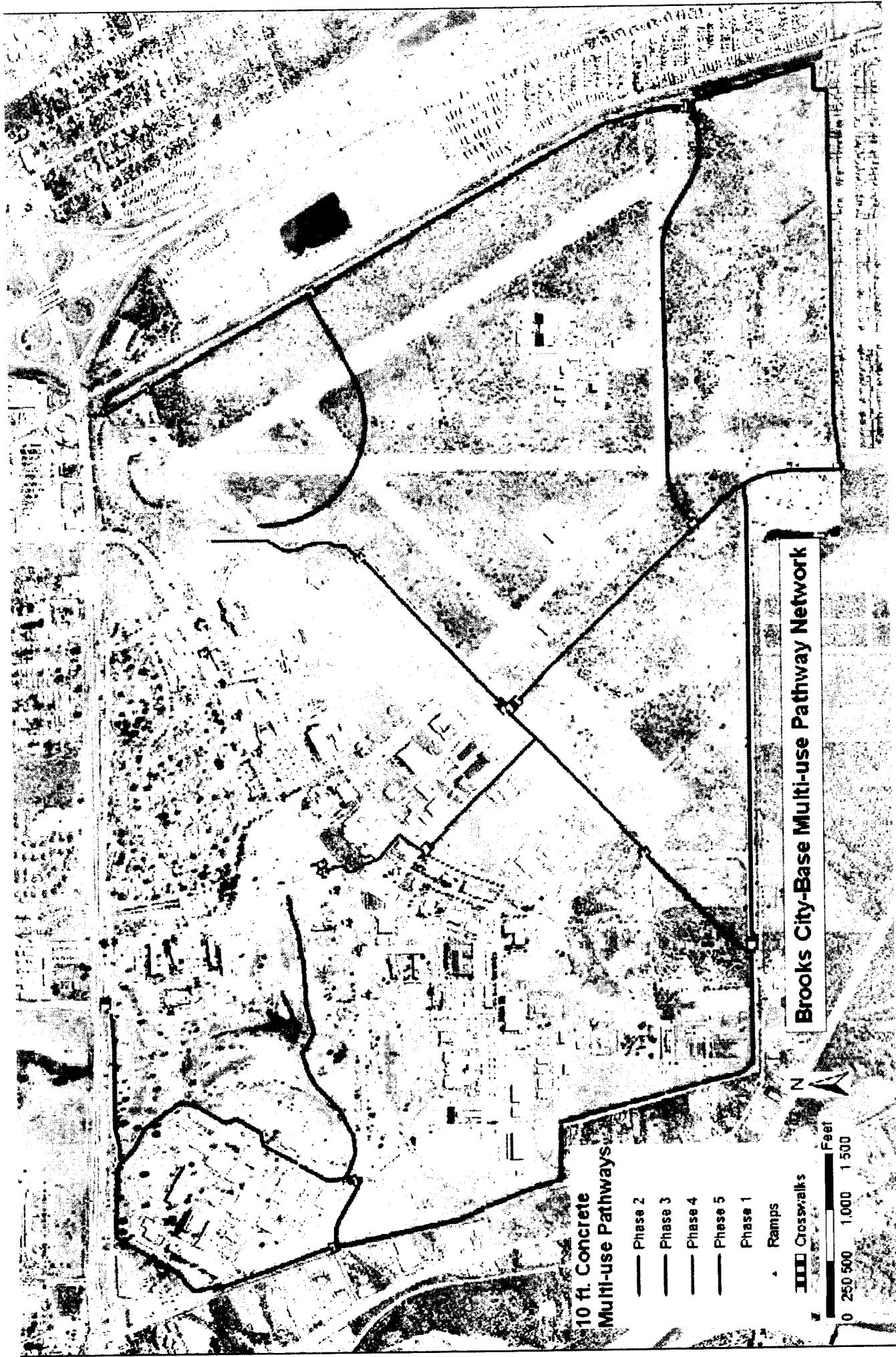


0 300 600 900 1,200 Feet



**Proposed Pedestrian Refuge Island Locations
2006 Enhancements Program**

[illegible]



Brooks City-Base Multi-use Pathway Network

