

Agenda item #22

**CITY OF SAN ANTONIO
PARKS AND RECREATION DEPARTMENT
CITY COUNCIL AGENDA MEMORANDUM**

TO: Sheryl Sculley, City Manager
FROM: Malcolm Matthews, Director, Parks and Recreation Department
SUBJECT: HollyHills Land Donation
DATE: June 1, 2006

SUMMARY AND RECOMMENDATIONS

This ordinance authorizes the acceptance of a donation from the San Antonio Parks Foundation and HollyHills Investments, LP. of a 143.254 acre tract of land located along the eastern border of Medina River and west of Applewhite Road in City Council District 4. The property is to be designated for park land.

Staff recommends approval of this ordinance.

BACKGROUND INFORMATION

This ordinance authorizes the acceptance of a donation from the San Antonio Parks Foundation of a 143.254 acre tract of land located along the eastern border of Medina River and west of Applewhite Road in City Council District 4. HollyHills Investments, LP has executed conveyance of said property to the San Antonio Parks Foundation on behalf of the City of San Antonio as park land donation. The San Antonio Parks Foundation will convey the property to the Parks and Recreation Department for development and operation upon City Council acceptance of the property.

The property will extend the Medina River Park to Applewhite Road along the Medina River, which is consistent with the recommendations outlined for the South Subarea in the Parks and Recreation System Strategic Plan and the Medina River Plan. Those plans recommend the development of a hike and bike trail along the Medina River corridor, connecting Medina River Park, Land Heritage Institute, Mission del Lago, and Mitchell Lake. Additional properties will be secured over the next six months, to include land adjacent to the Toyota Manufacturing Facility in order to have a continuous trail project.

POLICY ANALYSIS

This acquisition is consistent with the San Antonio Parks and Recreation System Strategic Plan, the 2003 Bond Program and 2005 Sales Tax Initiative in regard to the Medina River Project.

FISCAL IMPACT

Acquisition of this property will result in additional annual maintenance and security costs totaling \$41,391.00 which will be requested in the FY 2006-2007 operating budget. Construction of the hike and bike trail along the Medina River is proposed for completion in December 2007. The 2003 Park Bond Program and the 2005 Proposition 2 Sales Tax Initiative included \$6.45 million for the Medina River Project.

COORDINATION

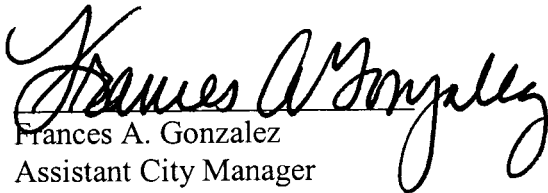
This action has been coordinated with the City Council District 4 Office, Planning Commission, Environmental Services Department, Finance Department and the Office of Management and Budget.

SUPPLEMENTARY COMMENTS

A Discretionary Contracts Disclosure statement is not required.

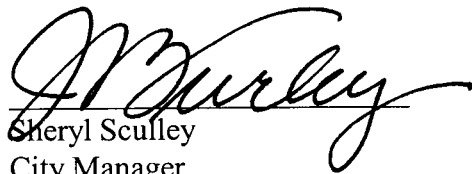


Malcolm Matthews
Director of Parks and Recreation



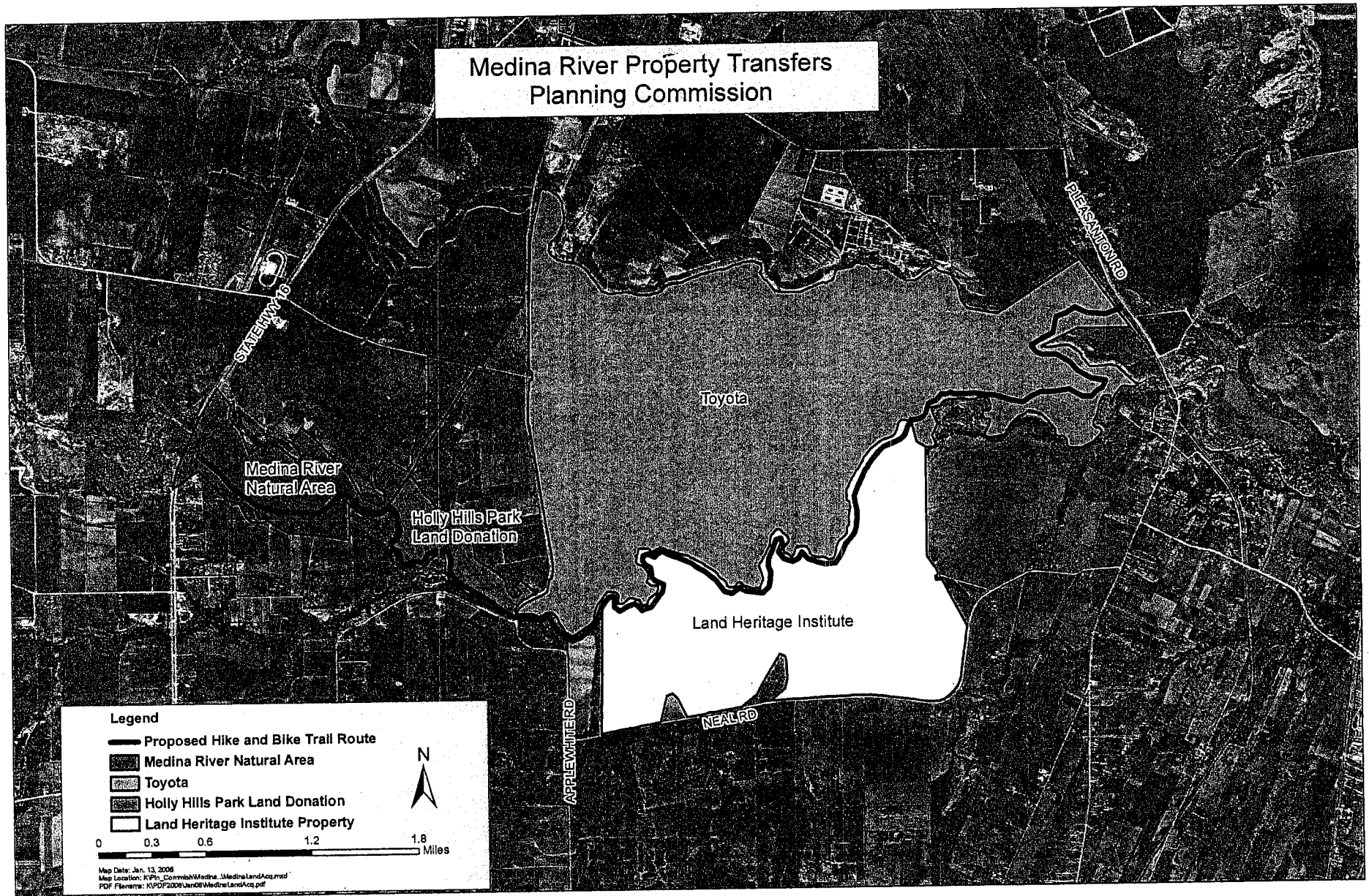
Frances A. Gonzalez
Assistant City Manager

Approved for Council Consideration:



Cheryl Sculley
City Manager

Medina River Property Transfers Planning Commission



Metes and Bounds Description

Of A

143.254 Acre Tract
(6,240,146 Square Feet)
Ignacio Perez Grant
Bexar County, Texas

Metes and bounds description of all that certain 143.254 acre tract or parcel of land lying and being situated in the Ignacio Perez Grant, 7 Texas Reporter, 338 and being a portion of a 494.9 acre tract as conveyed to HollyHills Investments, LP by a corrected special warranty deed as recorded in Volume 11612, Page 878 of the Official Public Records of Bexar County, Texas and being more particularly described as follows:

BEGINNING at a 1" iron pipe marking the southwest corner of the aforesaid 494.9 acre tract and also marking the southeast corner of a 241.758 acre tract as recorded in Volume 4991, Page 1906 of the Official Public Records of Real Property for Bexar County, Texas and lying on the north bank of the Medina River;

THENCE: N 34°02'42" E along the aforesaid common line of the 494.9 acre tract and the 241.758 acre tract for a distance of 1350.06 to a 5/8" iron rod set for corner;

THENCE: across the aforesaid 494.4 acre tract for the following calls:

S 41°14'02" E for a distance of 601.01 feet;
S 30°20'07" E for a distance of 323.50 feet to a found iron rod marked with a Pape-Dawson plastic cap;
S 71°43'56" E for a distance of 116.47 feet to a found iron rod marked with a Pape-Dawson plastic cap;
S 31°55'38" E for a distance of 205.52 feet to a found iron rod marked with a Pape-Dawson plastic cap;
S 46°36'11" E for a distance of 351.29 feet to a found iron rod marked with a Pape-Dawson plastic cap;
S 29°47'53" E for a distance of 507.00 feet to a found iron rod marked with a Pape-Dawson plastic cap;
S 21°02'16" E for a distance of 283.22 feet to a found iron rod marked with a Pape-Dawson plastic cap;
S 32°21'36" E for a distance of 558.04 feet to a found iron rod marked with a Pape-Dawson plastic cap;
S 73°01'31" E for a distance of 260.04 feet to a found iron rod marked with a Pape-Dawson plastic cap;
S 52°40'58" E for a distance of 378.42 feet to a found iron rod marked with a Pape-Dawson plastic cap;
S 04°44'34" E for a distance of 227.54 feet to a found iron rod marked with a Pape-Dawson plastic cap;
S 26°32'59" W for a distance of 236.15 feet to a point for corner;
S 28°50'14" E for a distance of 270.97 feet to a point for corner;
S 67°56'56" E for a distance of 194.89 feet to a point for corner;
N 68°56'40" E for a distance of 99.41 feet to a point for corner;
N 53°20'51" E for a distance of 118.83 feet to a point for corner;
N 89°36'45" E for a distance of 146.74 feet to a point for corner;
S 47°46'36" E for a distance of 202.62 feet to a point for corner;
S 20°10'53" E for a distance of 153.48 feet to a point for corner;
S 50°58'20" E for a distance of 58.81 feet to a point for corner;
S 88°11'17" E for a distance of 182.95 feet to a point for corner;
S 68°31'21" E for a distance of 75.79 feet to a point for corner;
N 64°48'34" E for a distance of 77.94 feet to a point for corner;
N 62°05'30" E for a distance of 78.77 feet to a found iron rod marked with a Pape-Dawson plastic cap;
N 40°03'31" W for a distance of 388.96 feet to a found iron rod marked with a Pape-Dawson plastic cap;
N 24°01'49" E for a distance of 234.64 feet to a found iron rod marked with a Pape-Dawson plastic cap;
S 49°14'09" E for a distance of 702.72 feet to a found iron rod marked with a Pape-Dawson plastic cap;
S 77°02'51" E for a distance of 35.10 feet to a found iron rod, marked with a Pape-Dawson plastic cap, and lying on the west right of way line of Applewhite Road and the east right-of-way line of the aforementioned 494.9 acre tract;

THENCE: with the aforesaid west right-of-way line of Applewhite Road and the east line of the said 494.9 acre tract for the following calls:

S 12°57'07" W for a distance of 66.67 feet to a found iron rod marked with a Vickrey & Associates plastic cap;
S 64°57'07" W for a distance of 700.00 feet to a found iron rod marked with a Vickrey & Associates plastic cap;
S 49°10'07" W for a distance of 185.00 feet to a found iron rod marked with a Vickrey & Associates plastic cap;

S 25°35'07" W for a distance of 271.50 feet to a point lying on the south line of the herein described tract and the gradient boundary of the Medina River as established by Vickrey and Associates in April 2004;

THENCE: along the aforesaid gradient boundary for the following calls:

S 88°09'33" W for a distance of 129.09 feet to a point for corner;
 N 78°50'26" W for a distance of 131.87 feet to a point for corner;
 N 60°20'07" W for a distance of 1241.94 feet to a point for corner;
 N 64°24'06" W for a distance of 116.48 feet to a point for corner;
 N 66°12'58" W for a distance of 142.23 feet to a point for corner;
 N 51°44'09" W for a distance of 335.52 feet to a point for corner;
 N 48°37'33" W for a distance of 46.29 feet to a point for corner;
 N 33°31'53" W for a distance of 54.96 feet to a point for corner;
 N 19°58'31" W for a distance of 23.02 feet to a point for corner;
 N 18°31'47" W for a distance of 123.24 feet to a point for corner;

N 38°48'33" W for a distance of 53.83 feet to a point for corner and lying on the east line of a called 24.998 acre tract as described by a deed recorded in Volume 8344, Page 52 of the Official Public Records of Real property of Bexar County Texas;

THENCE: along the centerline of the old channel of the Medina River for the following calls:

N 21°04'53" W for a distance of 25.01 feet to a found iron rod marked with a Vickrey & Associates plastic cap;
 N 13°15'07" E for a distance of 111.00 feet to a found iron rod marked with a Vickrey & Associates plastic cap;
 N 03°05'07" E for a distance of 406.00 feet to a found iron rod marked with a Vickrey & Associates plastic cap;
 N 32°24'53" W for a distance of 141.00 feet to a found iron rod marked with a Vickrey & Associates plastic cap;
 N 76°24'53" W for a distance of 154.00 feet to a found iron rod marked with a Vickrey & Associates plastic cap;
 S 71°20'07" W for a distance of 281.00 feet to a found iron rod marked with a Vickrey & Associates plastic cap;
 S 33°35'07" W for a distance of 376.00 feet to a found iron rod marked with a Vickrey & Associates plastic cap;
 S 72°35'07" W for a distance of 219.00 feet to a found iron rod marked with a Vickrey & Associates plastic cap;
 N 81°24'53" W for a distance of 22.10 feet to point on the southern boundary of the herein described tract, the west

line of the aforesaid 24.988 acre tract and the aforementioned gradient boundary of the Medina River;

THENCE: along the aforesaid gradient boundary for the following calls:

N 31°05'10" W for a distance of 9.54 feet to a point for corner;
 N 52°47'42" W for a distance of 74.80 feet to a point for corner;
 S 88°03'43" W for a distance of 156.45 feet to a point for corner;
 S 59°08'25" W for a distance of 51.84 feet to a point for corner;
 S 30°55'17" W for a distance of 44.87 feet to a point for corner;
 S 62°57'56" W for a distance of 53.35 feet to a point for corner;
 N 75°33'33" W for a distance of 91.78 feet to a point for corner;
 N 45°25'29" W for a distance of 118.43 feet to a point for corner;
 N 39°29'38" W for a distance of 56.27 feet to a point for corner;
 N 20°14'03" W for a distance of 68.12 feet to a point for corner;
 N 08°45'48" E for a distance of 21.35 feet to a point for corner;
 N 16°18'52" W for a distance of 47.15 feet to a point for corner;
 N 09°48'12" W for a distance of 42.59 feet to a point for corner;
 N 14°33'42" W for a distance of 132.81 feet to a point for corner;
 N 18°45'29" W for a distance of 71.48 feet to a point for corner;
 N 55°28'13" W for a distance of 55.27 feet to a point for corner;
 N 88°55'14" W for a distance of 50.07 feet to a point for corner;
 S 81°03'21" W for a distance of 66.87 feet to a point for corner;
 N 50°28'08" W for a distance of 30.35 feet to a point for corner;
 N 13°01'06" W for a distance of 58.23 feet to a point for corner;
 N 22°42'57" E for a distance of 91.19 feet to a point for corner;
 N 13°29'11" E for a distance of 105.82 feet to a point for corner;
 N 42°06'11" E for a distance of 84.79 feet to a point for corner;
 N 77°51'25" E for a distance of 44.52 feet to a point for corner;

N 25°09'50" E for a distance of 95.47 feet to a point for corner;
N 25°59'14" E for a distance of 137.52 feet to a point for corner;
N 05°16'58" E for a distance of 89.47 feet to a point for corner;
N 02°35'48" E for a distance of 158.43 feet to a point for corner;
N 19°04'02" W for a distance of 270.07 feet to a point for corner;
N 11°29'02" W for a distance of 82.07 feet to a point for corner;
N 47°12'57" W for a distance of 117.78 feet to a point for corner;
N 71°55'21" W for a distance of 51.55 feet to a point for corner;
S 67°48'19" W for a distance of 22.64 feet to a point for corner POINT OF BEGINNING and containing 143.254
acres (6,240,146 square feet) of land more or less.

The bearings in this description are based upon Cooperative CORS Site (I:ZSA) and are grid bearings, Texas
State Plane Coordinate System, NAD 83 (CORS96), U.S., Texas South Central Zone (feet).

September 12, 2005



Surveyed By:

A handwritten signature in black ink, appearing to read "Mark R. Paulson", written over a horizontal line.

Mark R. Paulson
Registered Professional
Land Surveyor No. 2099

Site Map

HollyHills Land Donation



City of San Antonio
Parks and Recreation Department

HollyHills Land Donation

